

THINGS TO KNOW ABOUT YOUR ANTS

SPRAGUE

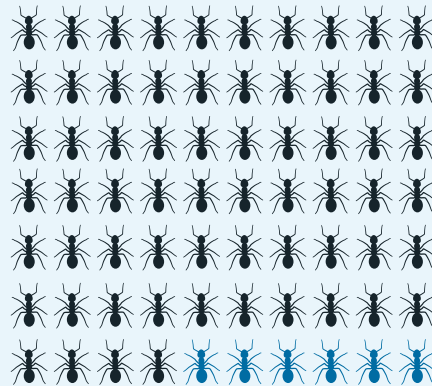
ALL ABOUT ANTS

- They live in colonies where each ant has a different job.
- The ants you are seeing are most likely the worker ants, only a small % of the total colony, who are responsible for collecting food for the colony.
- To eradicate the colony, the queen(s) must be targeted and eliminated.

ANT TREATMENT EXPECTATIONS

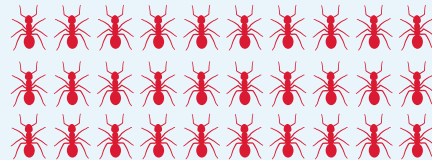
- How you can help:** remove any food the ants are trailing towards. Additionally, seal any cracks or crevices where they are entering.
- Our ant treatment is designed to target the queen. Worker ants will transport our treatment back to the colony and they will share it with the queen(s).
- Following treatment, **you may notice an increase in activity, which is expected and indicates that the treatment is working.**
- Because treatment requires worker ants to carry the treatment back, **it can take up to 2 weeks to fully eliminate the ant colony.**

Your Sprague Route Manager will conduct an inspection, determine the ant species, and apply the appropriate treatment method.



70%
WORKERS

**ONLY SMALL
% COLLECT
FOOD FOR
THE COLONY**



**QUEEN(S)
& SOLDIERS**

TREATMENT



**ANTS MOVE THE
INTERVENTION
THROUGHOUT
THE COLONY
TO THE
QUEEN(S)**



QUEEN